

Installing a Copier/Printer on a Non RCCC Mac

1. Connect to RCCCPersonalDevice Wifi network.
2. Download and install the Pharos Pop Client for Mac.
 - a. Open Safari and type, or copy and paste, the following URL into the address bar. <https://pharos.com/uniprint/mac-updates/>
 - b. Click download next to the first component.

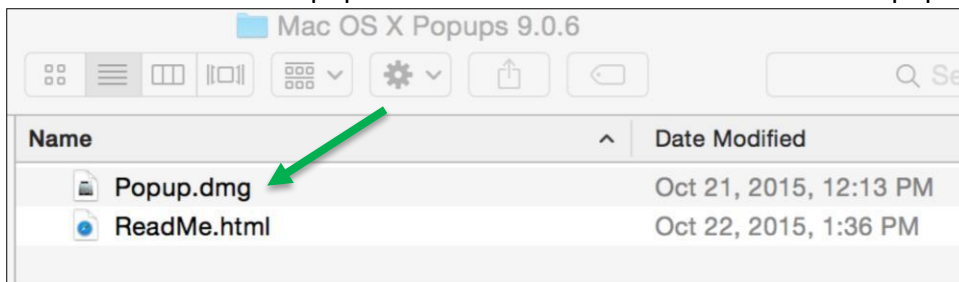


Macintosh Components
Created by Lindsay Lamb on Dec 19, 2013 2:05 PM. Last modified by bheffernan@pharos.com on Oct 25, 2015 4:44 PM.

Uniprint

Component	Release date	Downloads	Readme
Pharos Popup and Notify Clients 9.0.6 for Mac OS X 10.7 - 10.11	OCT 2015	download	readme
Pharos SignUp Vx3 Client 9.0.4 for MAC OS X 10.7 - 10.10	JULY 2015	download	readme

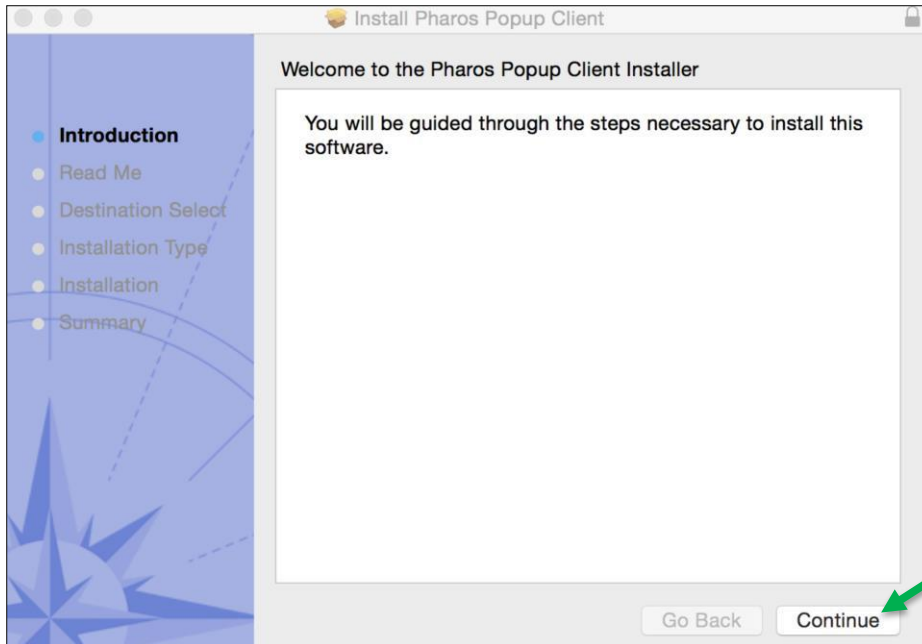
- c. Locate the Mac OS X Popups 9.0.6 download and double click the Popup.dmg file



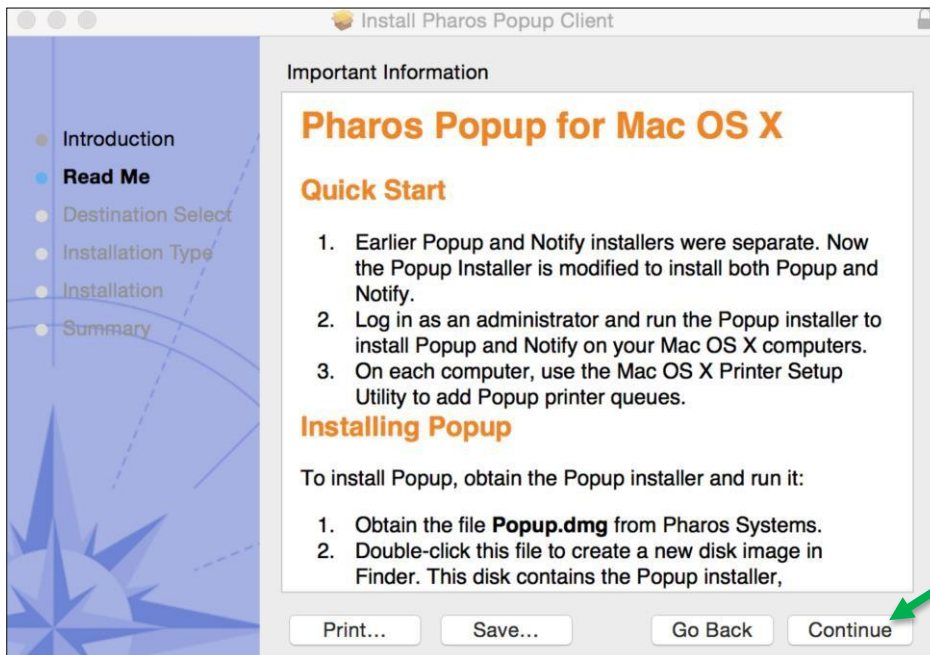
- d. Double click Popup.pkg



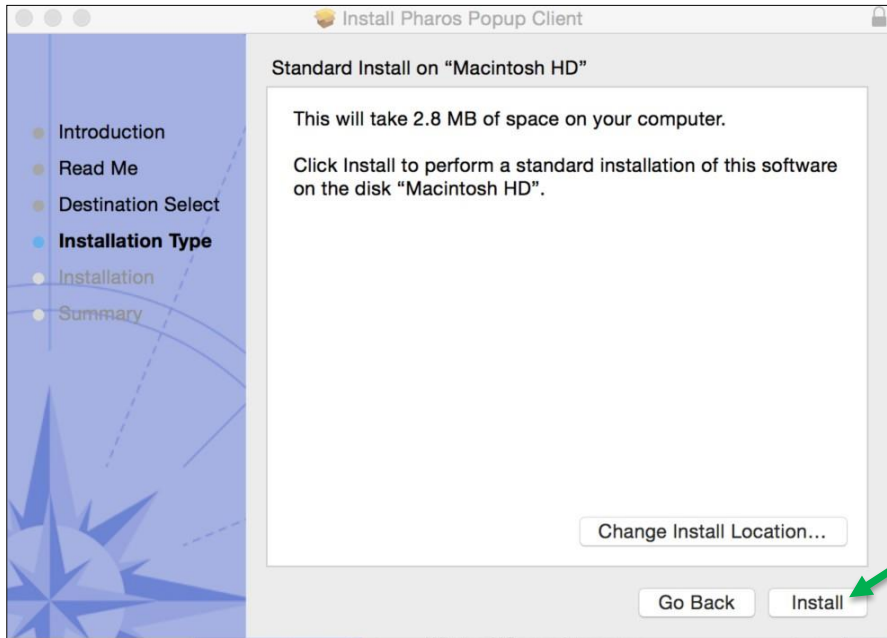
e. Click continue.



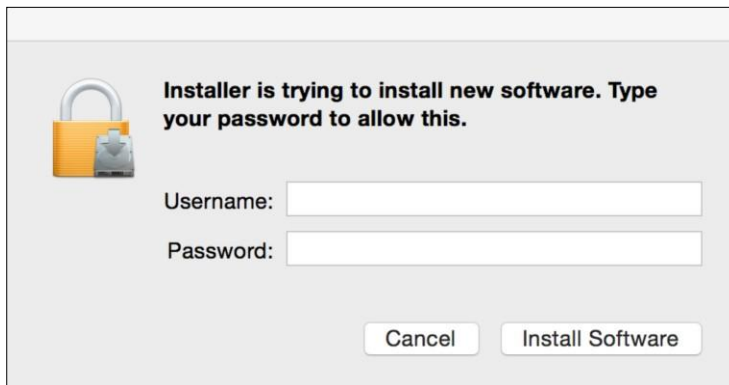
f. Click continue.



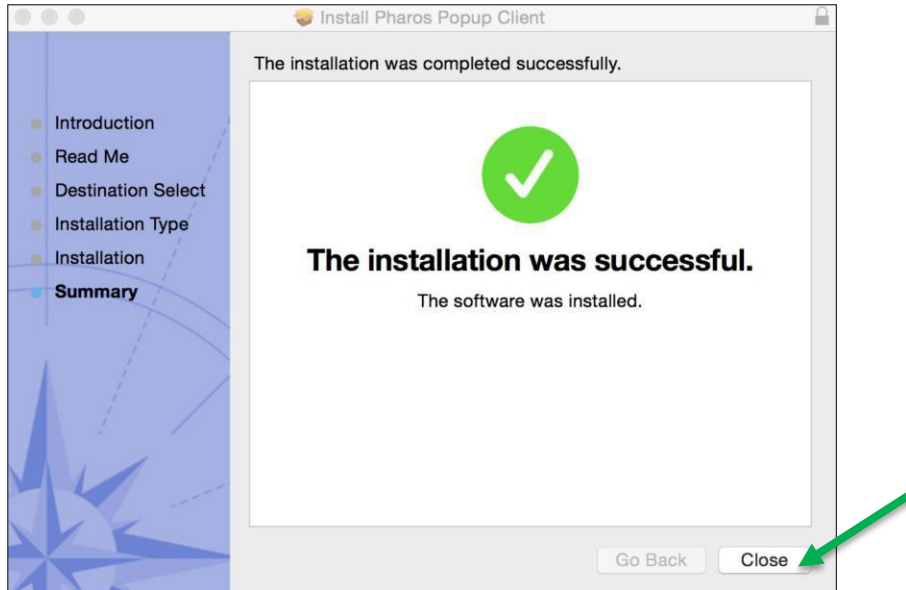
g. Click Install.



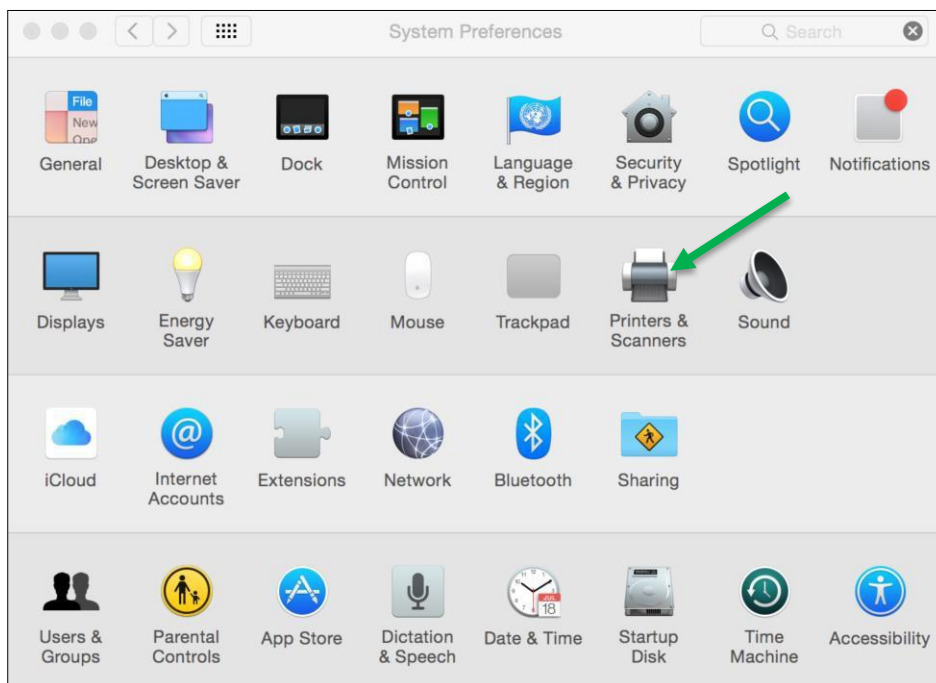
h. Enter your username and password.



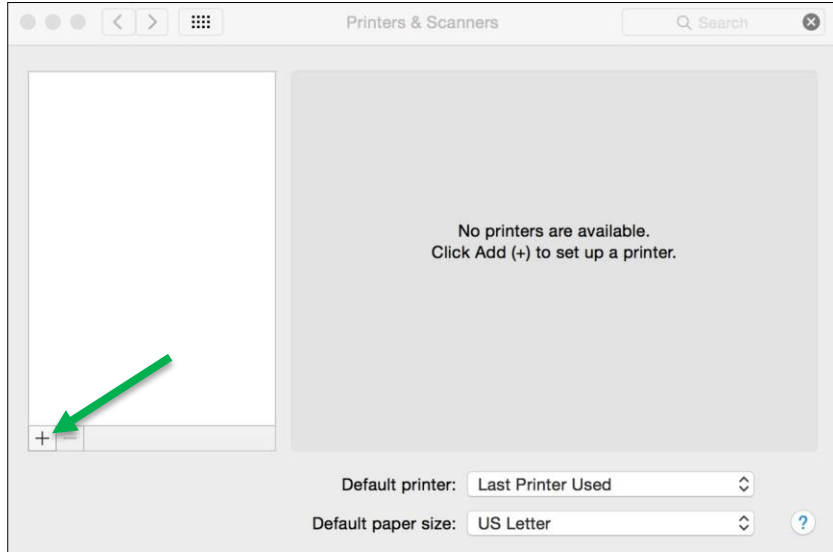
- i. The installation is complete, click close.



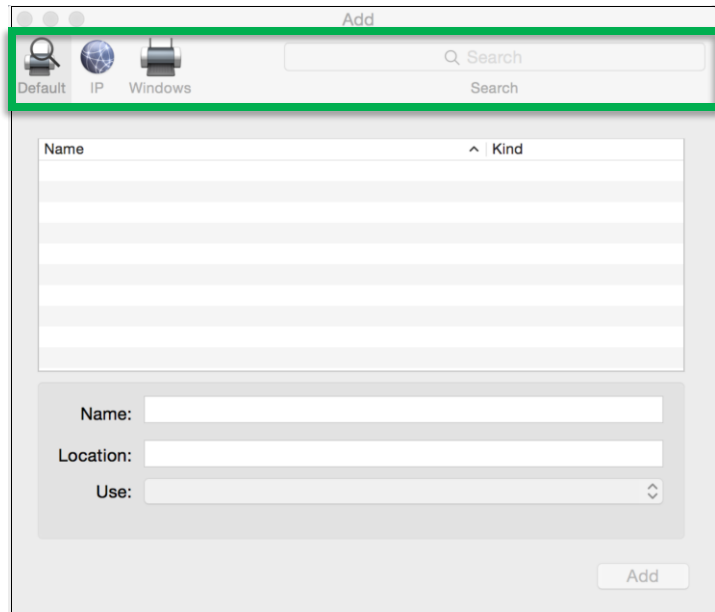
3. Open System Preferences.
4. Click Printers & Scanners.



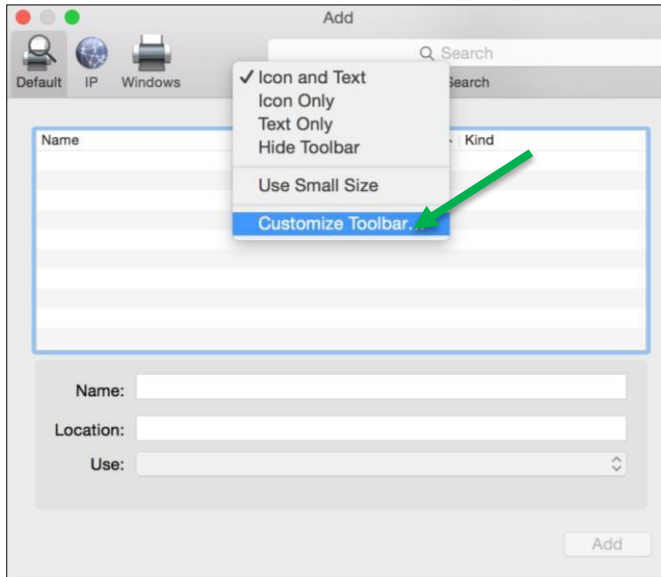
5. Click the + symbol to add a printer.



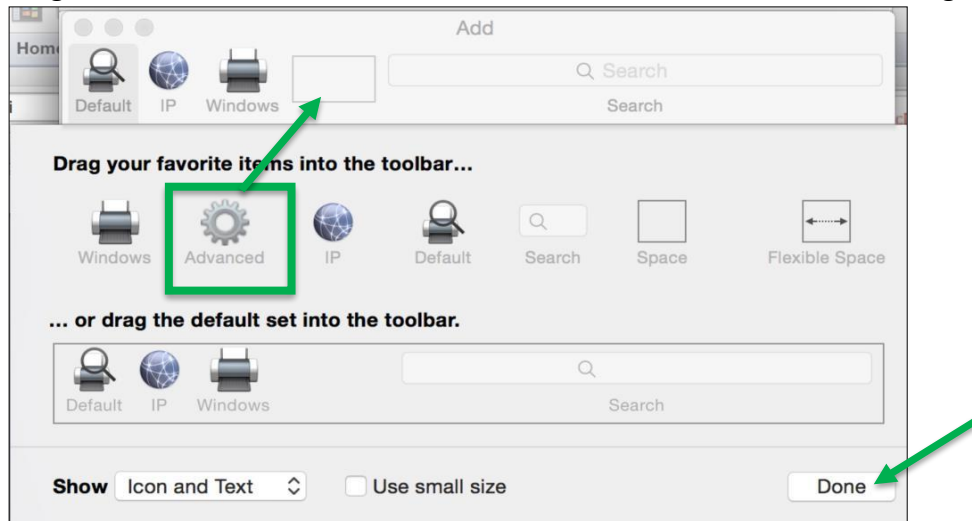
6. Hold down the Control key on the keyboard and click anywhere on the toolbar.



- a. From the popup menu that appears, select Customize Toolbar.

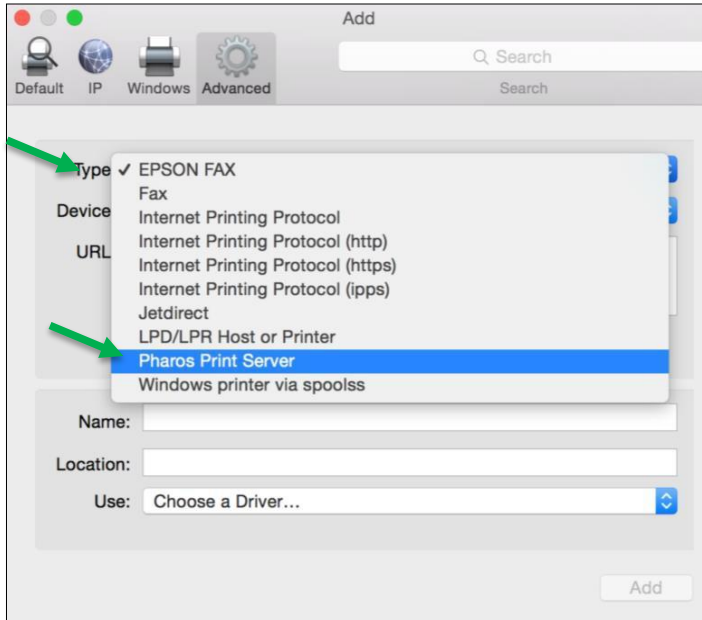


- b. Drag the Advanced icon to the toolbar and close the customization dialog by clicking done.



- c. Click the Advanced button in the toolbar.

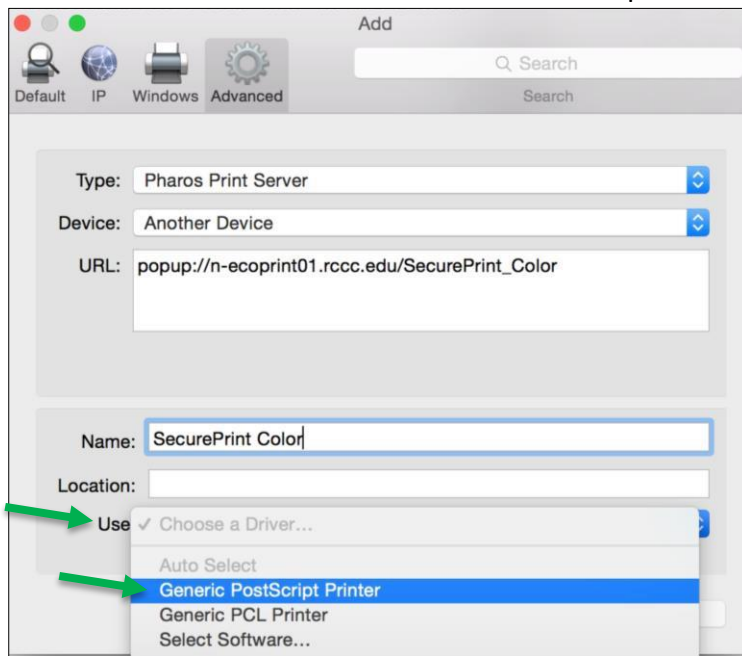
d. From the Type popup button, select Pharos Print Server.



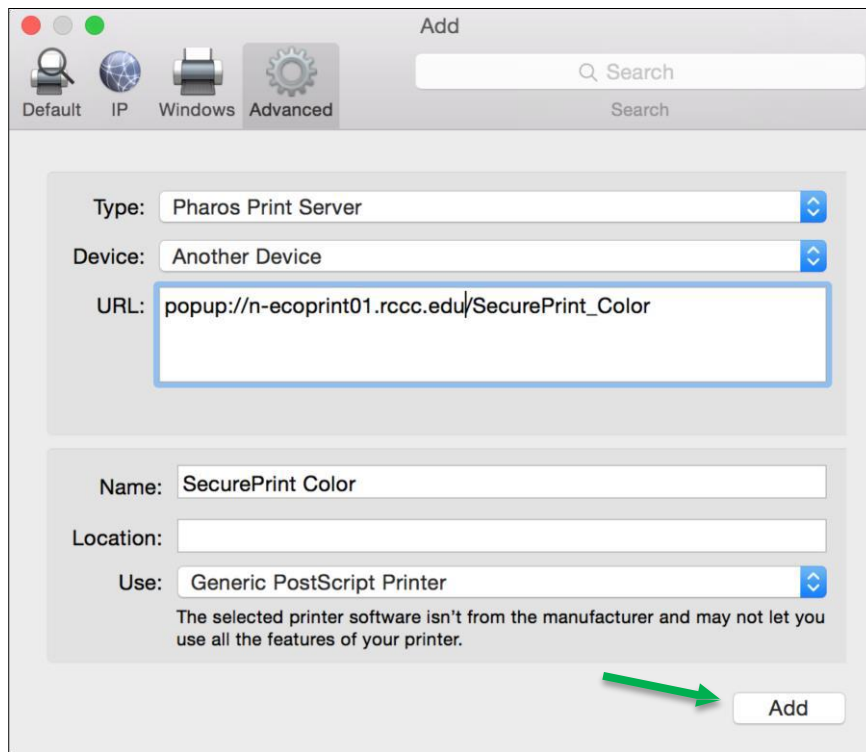
e. In the URL: box enter the appropriate URL from the list below.

Campus	URL	Queue Type
North	popup://n-ecoprint01.rccc.edu/SecurePrint_BW	Secure, Black & White
North	popup://n-ecoprint01.rccc.edu/SecurePrint_Color	Secure, Color
South	popup://s-ecoprint02.rccc.edu/SecurePrint_BW	Secure, Black & White
South	popup://s-ecoprint02.rccc.edu/SecurePrint_Color	Secure, Color
CBTC	popup://t-ecoprint03rccc.edu/SecurePrint_BW	Secure, Black & White
CBTC	popup://t-ecoprint03.rccc.edu/SecurePrint_Color	Secure, Color
NCRC & COSMO	popup://b-ecoprint04.rccc.edu/SecurePrint_BW	Secure, Black & White
NCRC & COSMO	popup://b-ecoprint04.rccc.edu/SecurePrint_Color	Secure, Color

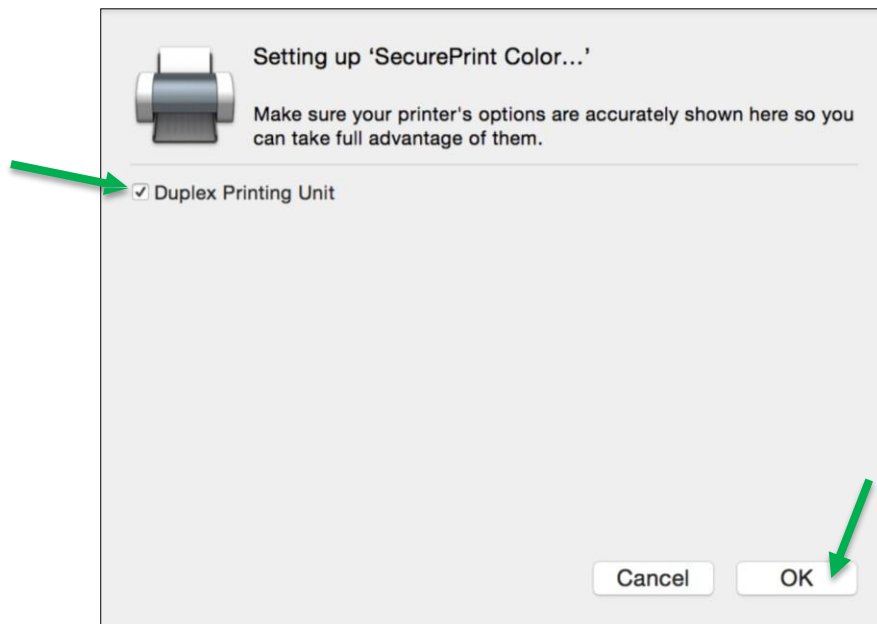
f. Click Choose a Driver then click Generic PostScript Printer.



g. Click Add.



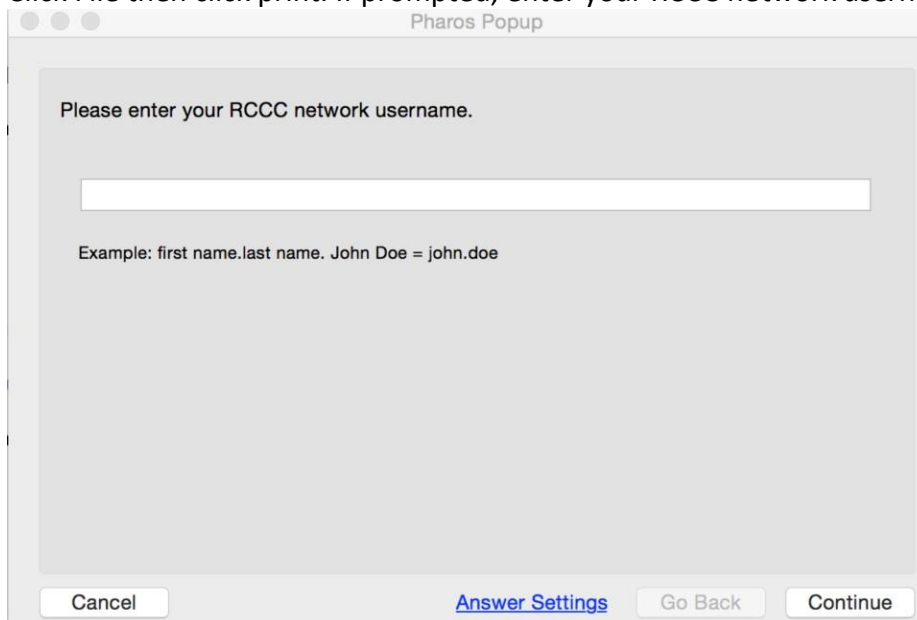
h. Click the box next to Duplex Printing Unit then click OK.



i. You have completed the installation process.

* Please note that you may be prompted to enter your username and password when you print.

1. Click File then click print. If prompted, enter your RCCC network username.



2. Enter your RCCC network password

Pharos Popup

Please enter your RCCC network password.

The same password used when logging onto RCCC computers/Blackboard.

[Answer Settings](#)