

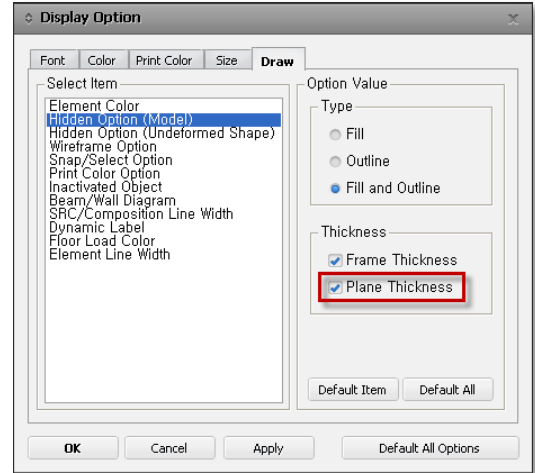
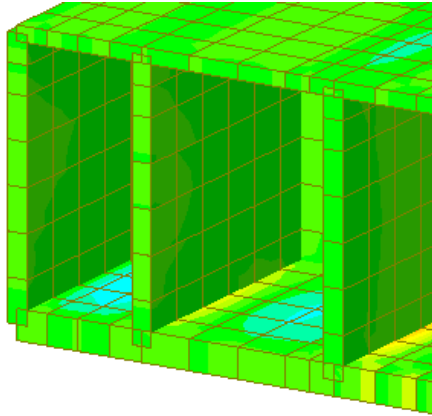


Various display options

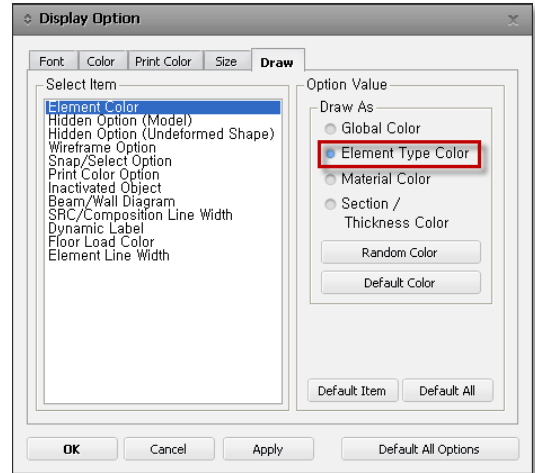
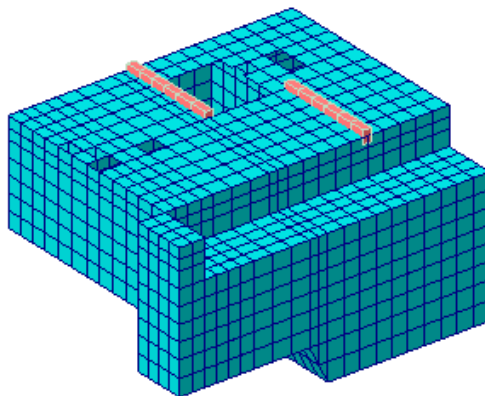


From Main Menu select **View > Display Option** (or )

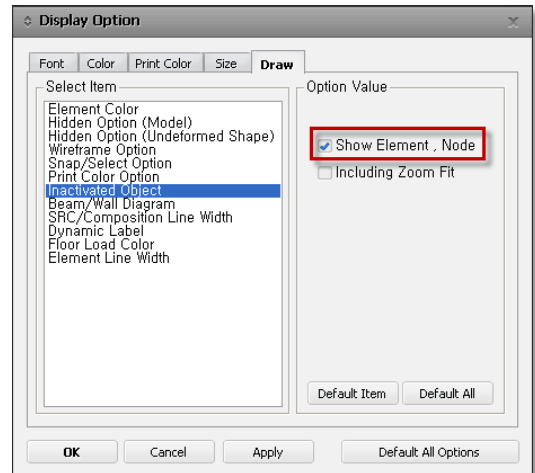
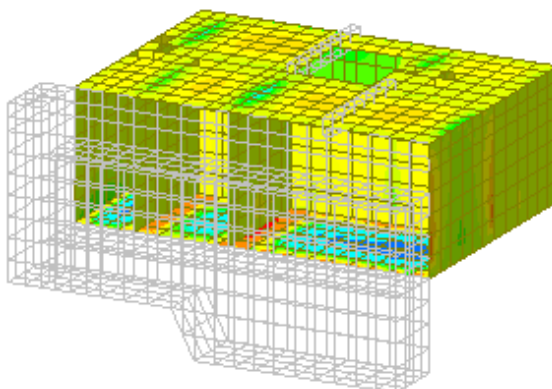
1. Thickness of the plate element



2. To distinguish plate elements from beam elements

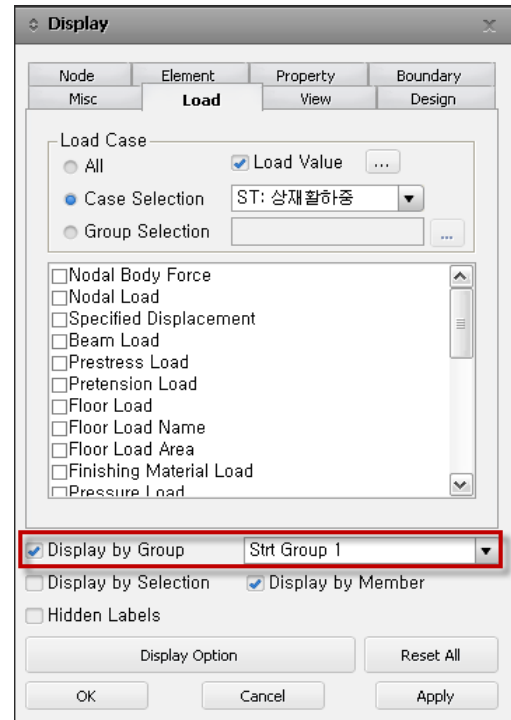
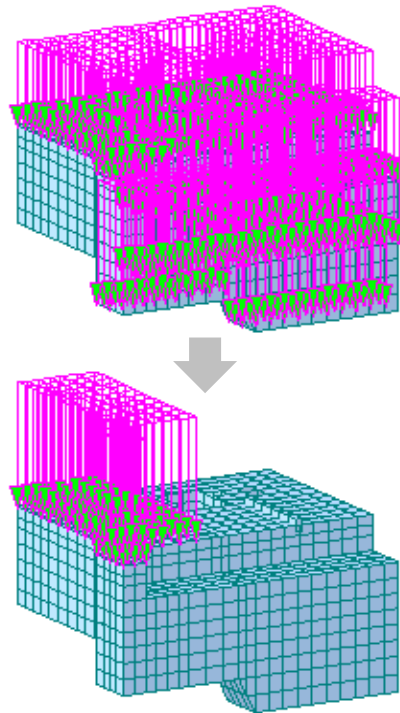


3. To show the outline of the Inactive elements



4. Display only to certain parts

If you enable the Display by Group option in the Display, only the information of the selected group is displayed. In the figure below on left, the entire "live load surcharge" is displayed, while in the figure further below only a part of the upper slab loads as defined in a group is displayed.



Display by Group options can be applied to loads as well as all display information that can be expressed in midas Civil .

5. Different colored elements depending on thickness

