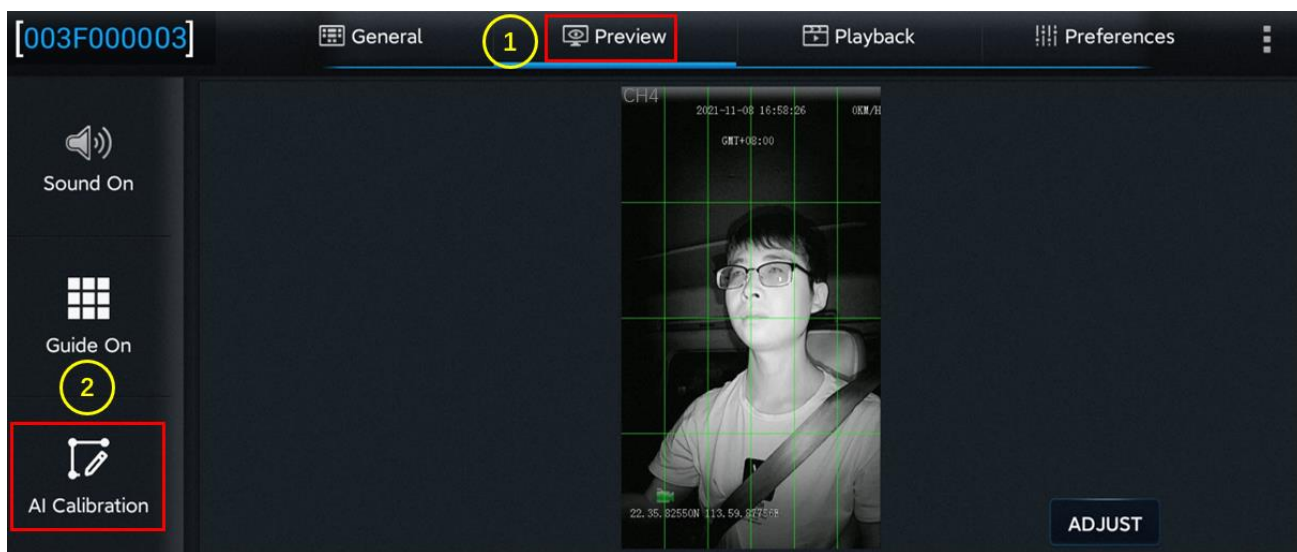


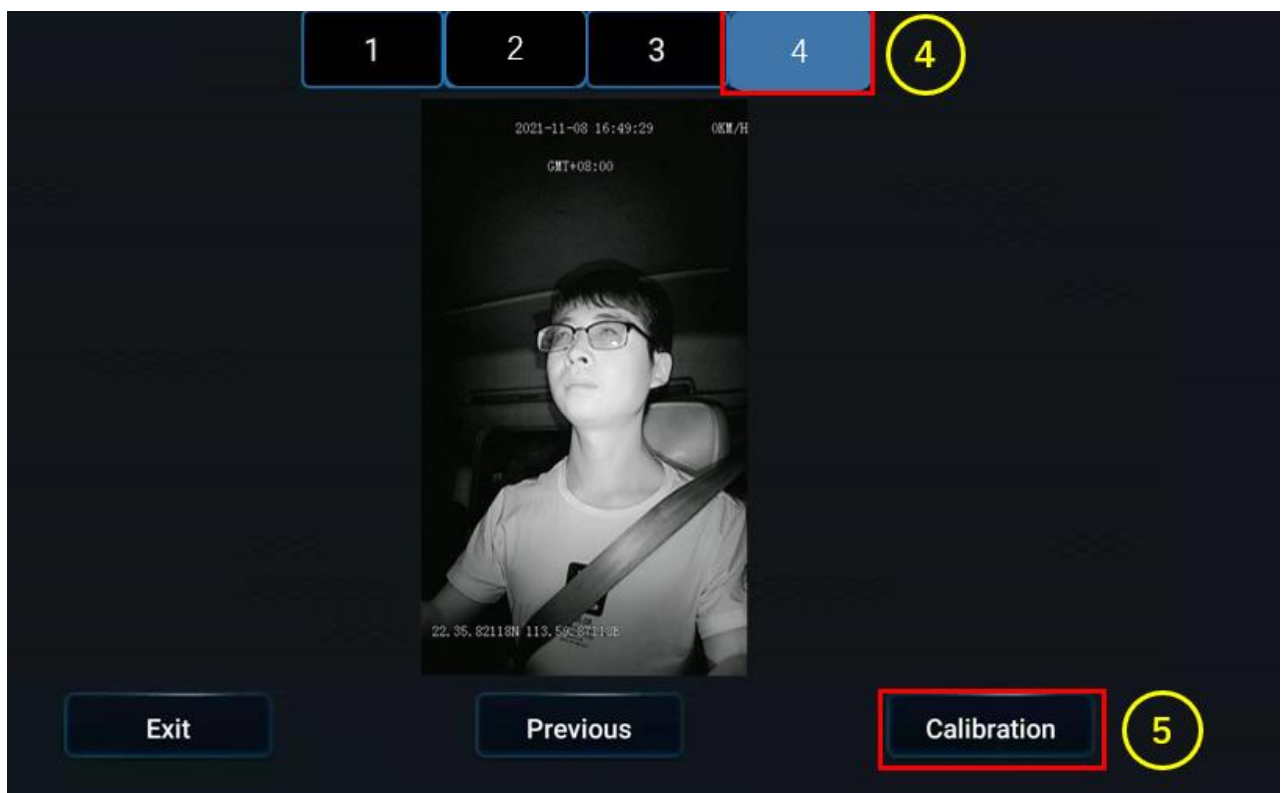
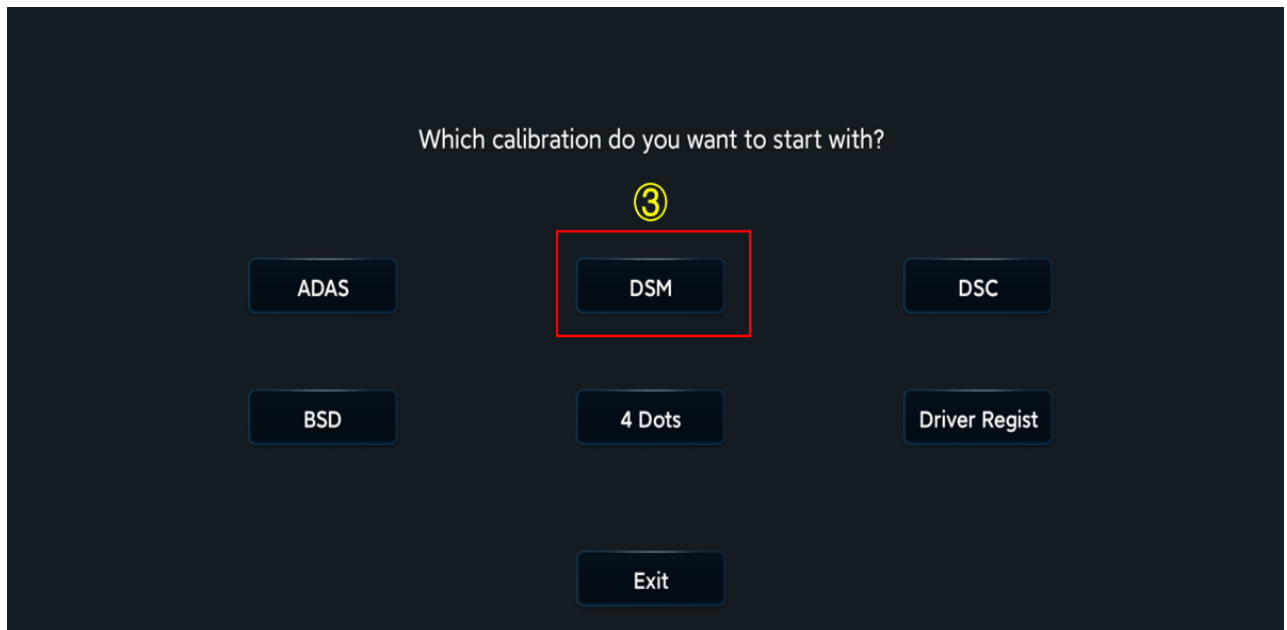
### 5.5.2.3 DMS Calibration (Optional)

C29N is the recommended optional DMS camera model. C29N, a camera with 0.7 T intelligent computing power, can provide professional DSM functions. Its built-in exposure of the central area of the face can cope with various complex light scenes (oblique sunlight, reflective clothing, black light-absorbing clothing, etc.). With a G-Sensor, it can automatically and flexibly adjust images to adapt to different installation statuses, such as left & right A-pillar installation or dashboard installation. It is also practical in the case where the camera is 50 cm to 100 cm away from the face, catering to the installation requirements of multiple vehicle models. Select an installation mode as needed to correctly install the C29N before DMS calibration.

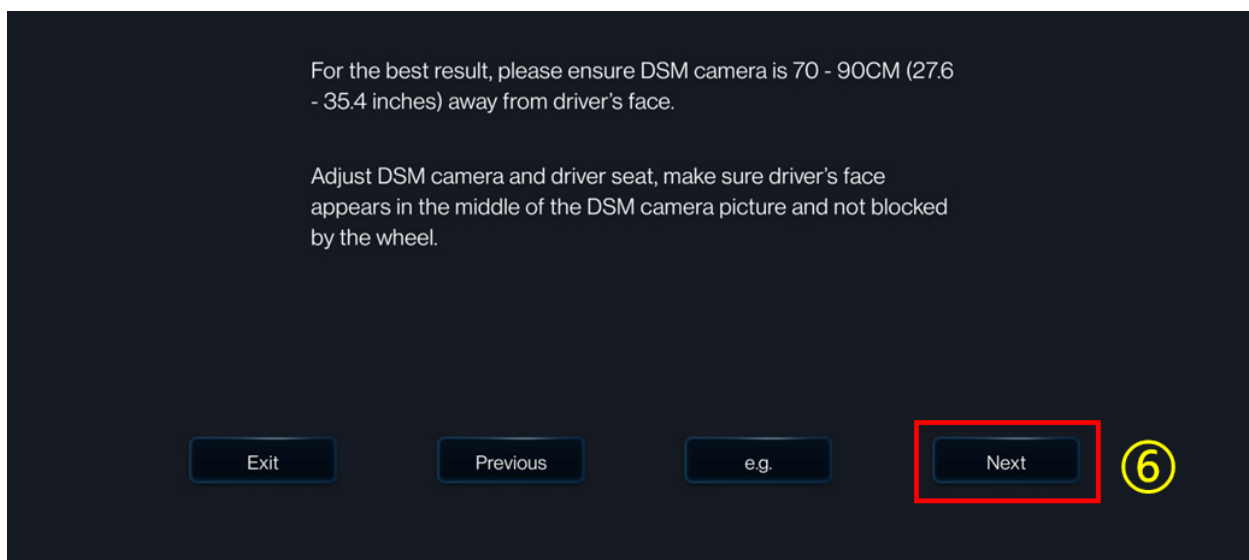
- ① On the home screen, tap **Preview**. The **Preview** screen is displayed.
- ② Tap **AI Calibration** for calibration selection



- ③ Tap **DMS** for calibration.
- ④ Select the corresponding channel of the DMS camera. C29N defaults to 4 channels
- ⑤ Tap **Calibration**



⑥ Confirm the prompts—Tap **Next**

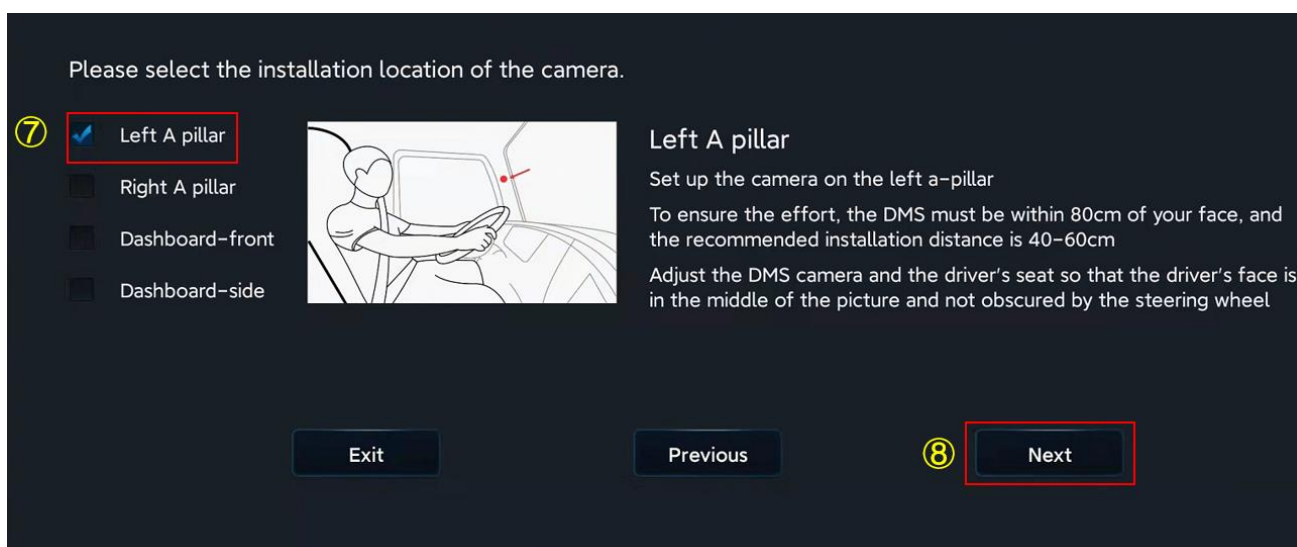


⑦ For the installation location of the DMS camera, the left A-pillar, the right A-pillar, the front side of the countertop, and the lateral side of the countertop are available. For any questions, please tap each option in turn, and refer to the legend and description on the right.

After selecting the corresponding installation mode, the software automatically associates the calibration method with the installation mode, not requiring any manual operation (for installation on the left A-pillar (near glass), the right A-pillar (near glass), and the lateral side of the dashboard, the lateral side calibration is applied, and for the installation on the front side of the dashboard, the front side calibration is applied).



Special notes: This step is of great importance. The installation mode must be consistent with the actual installation mode.





Especially: Before tapping **Next** to make the official calibration, the drivers should sit in the normal driving posture and look straight ahead.

⑧ Tap **Next** to move on to the next step for automatic face calibration

During calibration, make sure that the driver sits still according to normal driving habits and posture and looks straight ahead.

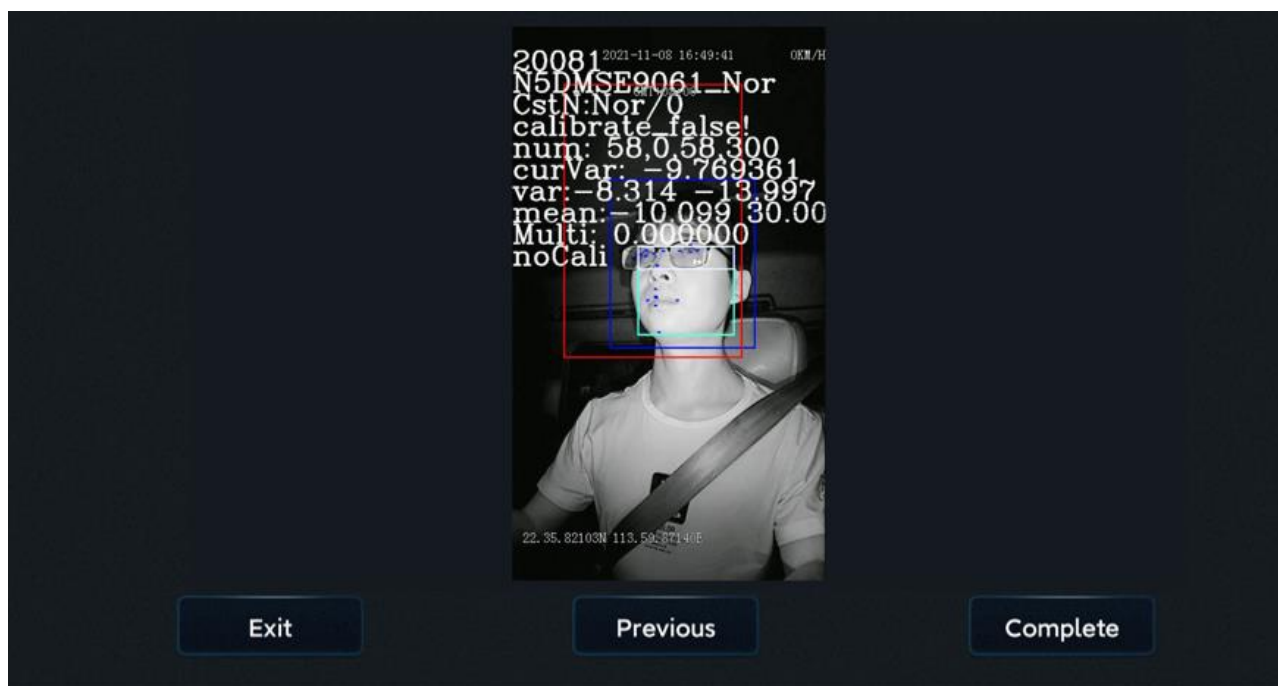
In the process of side calibration, the intelligent algorithm will automatically learn the driver's head deflection angle and face feature data. If the driver moves his/her head during the calibration, the calibration will restart automatically.



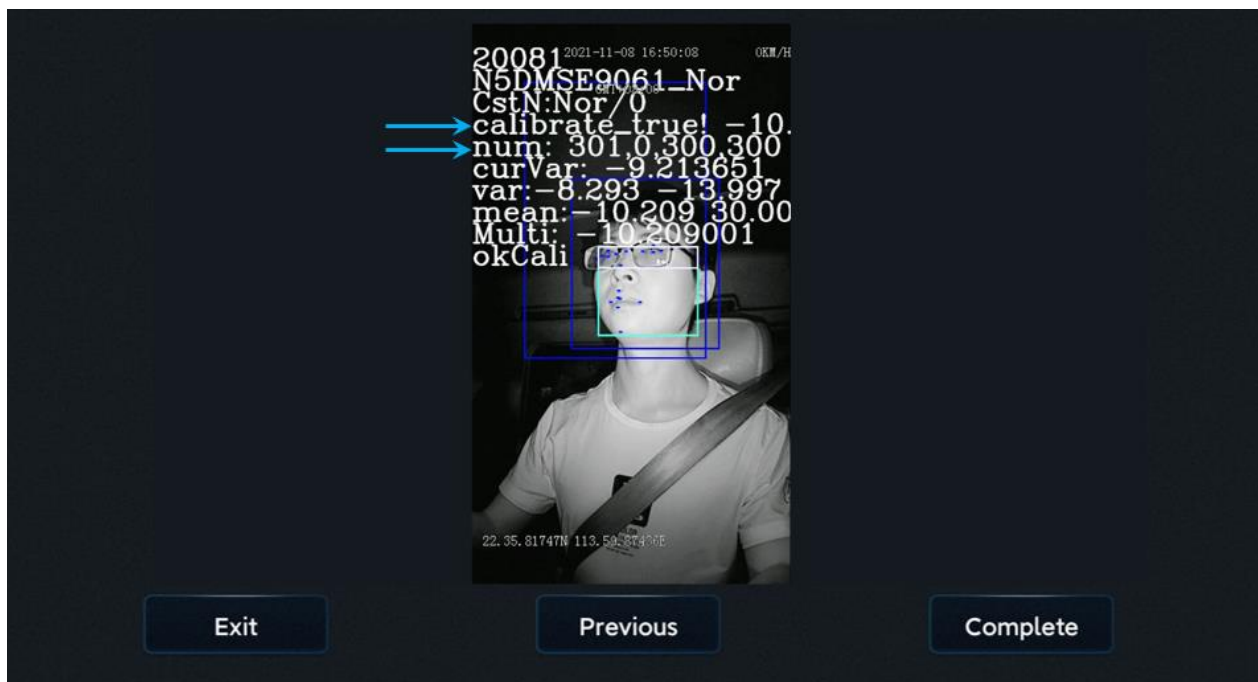
Special notes: For installation on the left A-pillar, the right A-pillar, and the lateral side of the dashboard, the human face and the camera must form a certain angle to complete the calibration. For installation on the front side of the dashboard, the human face must be in front of the camera to complete the calibration.

The driver sits still and waits for the equipment to be calibrated automatically. When the value of NUM reaches 301 in the mode of side installation and side calibration (51 in the mode of front installation and front calibration), the calibration frame turns from red to blue, and then the automatic calibration ends.

Calibration is ongoing:



Calibration is completed:



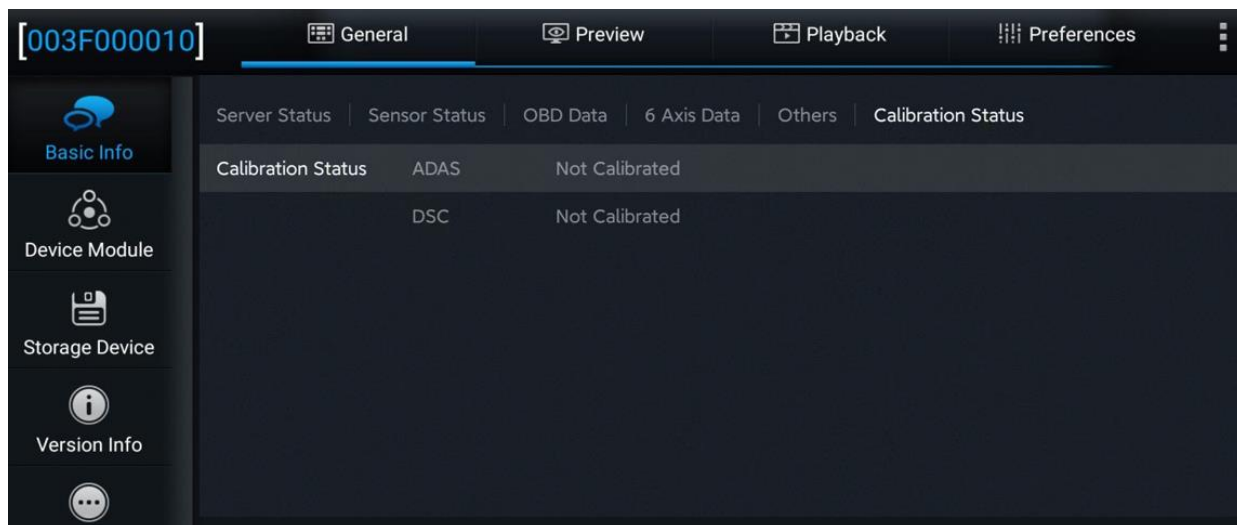
Tap **Complete** to complete the calibration and exit the calibration mode.

After the actual calibration of each algorithm channel is completed, check whether the calibration is successful through Veyes App. Tap **General > Basic Info > Calibration Status** on the Veyes interface to check whether each channel is calibrated successfully.



#### Special Notes:

- 1) Only the channel with the algorithm enabled will display the calibration status.  
There are two types of calibration status: not calibrated and successfully calibrated.
- 2) Since both ADAS and DSC adopt the automatic calibration, whose completion requires the vehicle to actually drive for a period of time, even if the parameters are configured, the status prompt that ADAS and DSC are successfully calibrated cannot be immediately seen.



Warning: The installation and calibration of the DMS camera must strictly comply with the requirements of the AD Plus2.0 Series Installation Guide. The installation distance from the lens to the face is 50~100 cm. The installation height of the lens is lower than that of the driver's face. Otherwise, the DMS cannot effectively distinguish whether the driver closes eyes, reducing the accuracy of relevant alarms. We are not liable for false positives caused by installation.