



SUPPLEMENTAL GUIDE

Symptom Control During Chemotherapy (SCDC): Measure Specifications and Process Intelligence Performance Engine (PIPE) Data Portal Calculation

Version 2

CONTENTS

Summary of Changes.....	1
Measure Specifications	2
Measure Logic Flowcharts.....	5
TABLE 1: Measure Flowchart	5
TABLE 2: Disease Diagnosis Flowchart.....	6
Patient Reported Outcome (PRO) Assessment Handling.....	7
Unusual Scenarios	8

SUMMARY OF CHANGES

Version 1 to Version 2

- Cancer diagnosis requirement added to Event criteria of measure specifications.
 - Disease Diagnosis Flowchart and value set reference added to support this requirement.
 - Measure Flowchart updated to include cancer diagnosis requirement.
- Language regarding chemotherapy/biologic immunotherapy administration requirement in Event criteria of measure specifications edited for clarity.
- Reference note for calculation of age added to Ages criteria of measure specifications.
- Change to clinic attribution methodology reflected in Measure Flowchart.
- Clarification of requirements for cycles 2 and 3 added to Measure Flowchart.

MEASURE SPECIFICATIONS

ELIGIBLE POPULATION IDENTIFICATION	
Measurement Period	<p>Measurement Period: twelve months</p> <p>Index Period: first six months [<i>count by whole months</i>] of twelve-month measurement period</p> <ul style="list-style-type: none"> • <i>EXAMPLE if Measurement Period was 2021 calendar year</i> <ul style="list-style-type: none"> ○ <i>Index Period = January 1, 2021 through June 30, 2021</i> <p>Denominator Identification Period: From the start of the Index Period until 15 days before the end of the Measurement Period.</p> <ul style="list-style-type: none"> • <i>EXAMPLE if Measurement Period was 2021 calendar year</i> <ul style="list-style-type: none"> ○ <i>Denominator Identification Period = January 1, 2021 through December 16, 2021</i>
Eligible Population	<p>Event (Index)</p> <p>Index occurs when all of the following criteria is met:</p> <ul style="list-style-type: none"> • Patient has a diagnosis of cancer (<i>Malignant Cancer Value Set [chem-02]</i>) <ul style="list-style-type: none"> ○ <i>See Disease Diagnosis Flowchart</i> • Cycle 1, Day 1 date occurred during the Index Period <ul style="list-style-type: none"> ○ <i>Searches Chemotherapy File</i> • Chemotherapy and/or biologic immunotherapy administered to patient on Cycle 1, Day 1 (<i>Chemotherapy Biologic Value Set [chem-01]</i>) <ul style="list-style-type: none"> ○ <i>Searches Encounter (both Encounter/ CPT Service Code and Diagnosis Codes) and Lab/ Procedure File (Procedure Code)</i> ○ <i>Date of encounter/ procedure must be equal to Cycle 1, Day 1 date</i> <p>Individual patients may have more than one Index Event.</p>
	<p>Ages</p> <p>18 years or older on date of Cycle 1, Day 1</p> <ul style="list-style-type: none"> • <i>Uses DOB from Demographic File</i>
Denominator	<ul style="list-style-type: none"> • The count of cycles included in a chemotherapy or biologic immunotherapy regimen associated with an Index Event. Maximum of three cycles [<i>Cycle Number = 1, 2, or 3</i>] per Index Event associated regimen. • The Cycle Day 1 Date of each cycle must occur during the Denominator Identification Period.
Exclusions	NONE

MEASURE CALCULATION	
Measure	<i>Symptom Severity Assessment During Chemotherapy</i>
Description	The percentage of chemotherapy and/or biologic immunotherapy cycles for patients 18 years of age and older with cancer receiving chemotherapy and/or biologic immunotherapy where a symptom severity assessment was completed during Days 5 - 15 of the chemotherapy and/or biologic immunotherapy cycle using the Patient-Reported Outcomes Common Terminology Criteria for Adverse Events (PRO-CTCAE) tool [PRO Assessment Code 24].
Numerator	The number of cycles in the denominator for which a PRO-CTCAE symptom severity assessment was completed during Days 5 – 15 of the cycle. <ul style="list-style-type: none"> • <i>Assessment window calculated using whole days – including days 5 and 15 - using the Cycle Day 1 Date as the anchor.</i> <ul style="list-style-type: none"> ○ <i>EXAMPLE: Cycle Day 1 Date = May 10, 2021; Assessment must occur on or between May 14, 2021 and May 24, 2021</i>
Measure Scoring	Rate/Proportion
Interpretation of Score	Higher score indicates better quality
Measure Type	Process
Measure	<i>Symptom Control During Chemotherapy: Pain</i>
Description	The percentage of chemotherapy and/or biologic immunotherapy cycles for patients 18 years of age and older with cancer receiving chemotherapy and/or biologic immunotherapy where the patient rated the pain severity for the cycle as none or mild during Days 5 – 15 of the cycle.
Numerator	The number of cycles in the denominator in which the patient’s pain severity rating [PRO Assessment Code 24 – Element Position 6] was none (0) or mild (1) during Days 5 – 15 of the cycle. <ul style="list-style-type: none"> • <i>Assessment window calculated using whole days – including days 5 and 15 - using the Cycle Day 1 Date as the anchor.</i> <ul style="list-style-type: none"> ○ <i>EXAMPLE: Cycle Day 1 Date = May 10, 2021; Assessment must occur on or between May 14, 2021 and May 24, 2021</i>
Measure Scoring	Rate/Proportion
Interpretation of Score	Higher score indicates better quality
Measure Type	Outcome

Measure	<i>Symptom Control During Chemotherapy: Nausea</i>
Description	The percentage of chemotherapy and/or biologic immunotherapy cycles for patients 18 years of age and older with cancer receiving chemotherapy and/or biologic immunotherapy where the patient rated the nausea severity for the cycle as none or mild during Days 5 – 15 of the cycle.
Numerator	<p>The number of cycles in the denominator in which the patient’s nausea severity rating [PRO Assessment Code 24 – Element Position 9] was none (0) or mild (1) during Days 5 – 15 of the cycle.</p> <ul style="list-style-type: none"> • <i>Assessment window calculated using whole days – including days 5 and 15 - using the Cycle Day 1 Date as the anchor.</i> <ul style="list-style-type: none"> ○ <i>EXAMPLE: Cycle Day 1 Date = May 10, 2021; Assessment must occur on or between May 14, 2021 and May 24, 2021</i>
Measure Scoring	Rate/Proportion
Interpretation of Score	Higher score indicates better quality
Measure Type	Outcome
Measure	<i>Symptom Control During Chemotherapy: Constipation</i>
Description	The percentage of chemotherapy and/or biologic immunotherapy cycles for patients 18 years of age and older with cancer receiving chemotherapy and/or biologic immunotherapy where the patient rated the constipation severity for the cycle as none or mild during Days 5 – 15 of the cycle.
Numerator	<p>The number of cycles in the denominator in which the patient’s constipation severity rating [PRO Assessment Code 24 – Element Position 10] was none (0) or mild (1) during Days 5 – 15 of the cycle.</p> <ul style="list-style-type: none"> • <i>Assessment window calculated using whole days – including days 5 and 15 - using the Cycle Day 1 Date as the anchor.</i> <ul style="list-style-type: none"> ○ <i>EXAMPLE: Cycle Day 1 Date = May 10, 2021; Assessment must occur on or between May 14, 2021 and May 24, 2021</i>
Measure Scoring	Rate/Proportion
Interpretation of Score	Higher score indicates better quality
Measure Type	Outcome

MEASURE LOGIC FLOWCHARTS

TABLE 1: Measure Flowchart

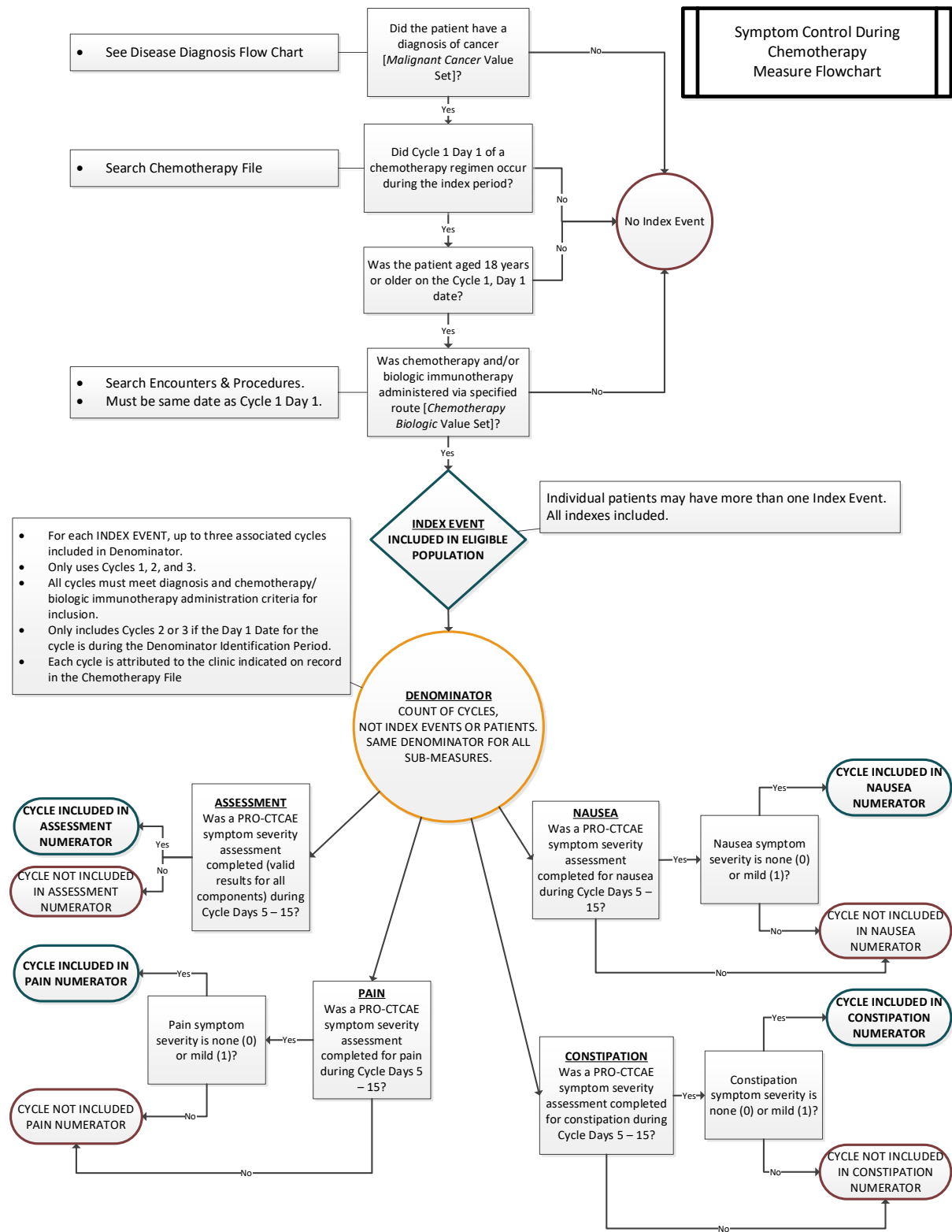
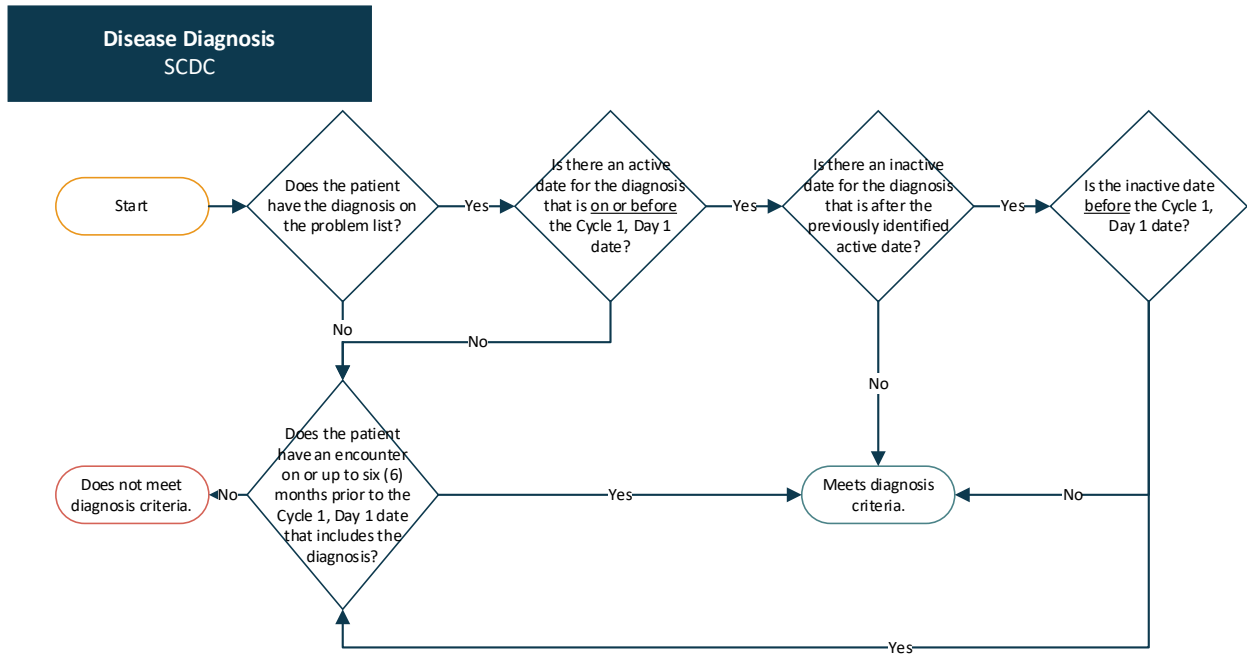


TABLE 2: Disease Diagnosis Flowchart



PATIENT REPORTED OUTCOME (PRO) ASSESSMENT HANDLING

Patient-Reported Outcomes Common Terminology Criteria for Adverse Events (PRO-CTCAE) [PRO Assessment Code 24]

- The PRO-CTCAE contains six items.
- Scoring is 0-4 for each item.
 - Only whole values 0 through 4 are acceptable for individual responses. Values outside this range are handled as blank/NULL values.
 - Unanswered items cannot be submitted as zeros as zero is a valid response.
- For the purposes of the Assessment measure, ‘completed’ is defined as all six items submitted with a valid score.
- For the purposes of the Symptom Severity measures, ‘completed’ is defined as the single symptom severity question being submitted with a valid score.
 - For example, for the Pain Severity measure the pain severity assessment is considered ‘completed’ if that field [*PRO Assessment Code 24 – Element Position 6*] is populated with a valid score, even if other fields in the overall assessment are incomplete.

View the [PRO Assessment Tool Reference](#) supplemental guide for further detail on the PRO-CTCAE.

UNUSUAL SCENARIOS

Two Cycle 1 Day 1 dates in chronological order without subsequent cycles between (e.g., no Cycle 2 Day 1 date between):

- If there are 30 days or less between Cycle 1 Day 1 dates, the later/most recent date is evaluated against Index Event Criteria.
- If there are greater than 30 days between Cycle 1 Day 1 dates, both dates are separately evaluated against Index Event Criteria.

Two Cycle 2 (or Cycle 3) Day 1 dates in chronological order without subsequent cycles between (e.g., no Cycle 1 Day 1 date between):

- If there are 30 days or less between Cycle 2 (or Cycle 3) Day 1 dates, use the later/most recent date for inclusion in the denominator.
- If there are greater than 30 days between Cycle 2 (or Cycle 3) Day 1 dates, exclude both dates from the denominator.